

# RG-SF-AIR288S

## Industrial-grade appearance design



## Stainless steel construction is more durable

# SELF-DEVELOPED CONTROL SYSTEM

Let the machine use more secure



When encountering an abnormal alarm

## THE MACHINE IS EASIER TO USE

Stable performance and no screw stuck



Easy to operate with automatic screw feeding

# PRODUCT ADVANTAGES



## SUITABLE FOR VARIOUS SCREWS

Any screw from M1.4-M5.0 can be used

Brushless electric screwdrivers last longer



# LARGE SILO TRANSPARENT WINDOW

Transparent viewing window for easy observation

Large silo can add more screws to avoid adding screws multiple times



## TOUCH DISPLAY PANEL

Can intelligently count the number of screws used

Parameters of machine operation can be adjusted



Interface 1  
Feeding



Interface 2  
Blowing



Interface 3  
Driver



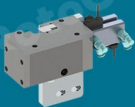
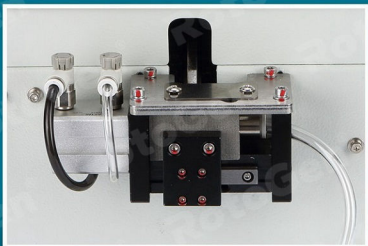
Interface 4  
Checking

# DISTRIBUTION CYLINDER

Aluminum alloy round tube cylinder body

Double guide rod anti-rotation structure guides better

1 out 2 and 1 out 3 air pipes can be customized



(standard cylinder)

1 cylinder out of 1 screw



(Need to customize)

1 cylinder out of 2 screws



(Need to customize)

1 cylinder out of 3 screws

# MULTIPLE APPLICATIONS

Can be used with various screw machines

Fast screw conveying speed and high screw locking efficiency



Single axis  
screw machine



Standard  
platform screw machine



Non-standard  
platform screw machine



Non-standard  
custom screw machine

# PRODUCT PARAMETERS

DO NOT PLACE THE MACHINE IN A WINDY, HIGH TEMPERATURE OR UNEVEN PLACE.  
WHEN TAKING OUT THE SCREWS ON THE RAIL, PLEASE BE CAREFUL NOT TO DAMAGE THE RAIL.  
IF THE SHAPE OF THE LOCKED PRODUCT IS IRREGULAR, IT CAN BE SOLVED BY ADDING A POSITIONING MOLD.



APPLICABLE SCREWS: M2.0-M8.0

## RG-SF-AIR688 SERIES



APPLICABLE SCREWS: M1.4-M5.0

## RG-SF-AIR288 SERIES

Name	Handheld Screw Feeding Machine	Model	RG-SF-AIR288S
Input Voltage	AC100-240V	Output Voltage	DC24V
Power	127W	Air Pressure	0.4-0.6Mpa
Screw Model	M1.4-M5.0	Screw Length	<20MM
Screw Capacity	1000ML	Conveying Distance	1-4M
Display Method	LCD touch screen	Noise Level	<60dB
Screwdriver Type	Brushless Screwdriver	Screwdriver Torque	Torque adjustable
Screw Conveying Speed	0.4-0.9S/PC	Lock Screw Efficiency	60-70PCS/MIN
Total Weight	11KG	Dimensions	285*185*H335MM



# PRODUCT FEATURES

TOOLMECH PVT. LTD. IS A LEADING MANUFACTURER OF AUTOMATICALLY OPERATING PNEUMATICALLY DRIVEN CNC CUTTING EQUIPMENT.  
WE HAVE A RANGE OF PRODUCTS INCLUDING: AUTOMATICALLY OPERATING PNEUMATICALLY DRIVEN CNC CUTTING EQUIPMENT.  
WE HAVE A RANGE OF PRODUCTS INCLUDING: AUTOMATICALLY OPERATING PNEUMATICALLY DRIVEN CNC CUTTING EQUIPMENT.



## High Quality Motor

Stronger power, higher efficiency and longer service life.



## Intelligent Control Chip

Make sure that every part of the machine is functioning properly.



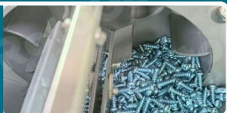
## Stainless Steel Rail

High-quality steel is more wear-resistant and has a longer service life.

# PRODUCT WORKFLOW

REGULARLY CLEAN THE SCREW POCKETS TO KEEP THE POCKETS CLEAN.  
REPLACE THE SCREWDRIVER BIT. PLEASE REPLACE THE SCREWDRIVER BIT WITH THE SAME SIZE AS THE RANDOM ONE.  
REPLACE OR ADJUST THE BRUSH. THE BRUSH CAN BE ADJUSTED BY LOOSENING THE TWO SCREWS HOLDING THE BRUSH.

**1** Load the screws into the storage bin.



The screw is conveyed to the guide by the rotating blade.

**2**



**3** The guide rail arranges the screws and sends them to the distributor by vibration.



The dosing system feeds the screw into the airway.

**4**



The air tube sends the screw to the screwdriver head through the electronic control system.

**5**



The screw reaching the electric screwdriver head is locked

**6**





# PRODUCT STRUCTURE

IF THERE IS NO SCREW ON THE BIT HEAD, PRESS THE SCREWDRIVER ENTER TWICE, AND A SCREW WILL BE DELIVERED.  
BEFORE LOCKING THE SCREW FOR THE FIRST TIME, CHECK WHETHER THERE IS A SCREW ON THE HEAD OF THE SCREWDRIVER.  
CONNECT THE AIR SOURCE, ADJUST THE TORQUE OF THE ELECTRIC SCREWDRIVER, AND TEST ON THE POWER OF THE EQUIPMENT.



# APPLICATION FIELD

This device is suitable for related products that require mounting screws.

For example: power socket production line, electric toy production line, solenoid valve production line, LED light production line, wood processing and furniture production, etc.



Computer assembly



Circuit assembly



Mobile phone assembly



Socket assembly



Toy assembly



Assembly line



Wood assembly



Car assembly



Appliance Assembly

# PRODUCT DISPLAY

TORQUE ADJUSTMENT: THE TORQUE CAN BE ADJUSTED DIRECTLY THROUGH THE STEPLASS ADJUSTMENT KNOB.  
 REPLACE OR ADJUST THE BRUSH THE BRUSH CAN BE ADJUSTED BY LOOSENING THE TWO SCREWS HOLDING THE BRUSH.  
 REPLACE THE SCREWDRIVER BIT. PLEASE REPLACE THE SCREWDRIVER BIT WITH THE SAME SIZE AS THE RANDOM ONE.



0.2-25KGF.CM



10-70KGF.CM



0.2-25KGF.CM



10-70KGF.CM



1-30KGF.CM



20-50KGF.CM



FRONT



BEHIND



BESIDE



OTHER

# PRODUCT LIST

LAST SAYING: ONE MACHINE PLUS ONE PERSON CAN REPLACE THE WORK OF THREE PEOPLE AND SAVE TWO LABOR COSTS.  
HIGH EFFICIENCY: THE ACTION OF SHOOTING SCREWS BY HAND IS OMITTED, AND 40-70 SCREWS CAN BE LOADED IN 1 MINUTE.  
BASIS: THE LEFT HAND DOES NOT NEED TO TAKE SCREWS, IT CAN BE USED TO HOLD THE PRODUCT, AND THE WORKLOAD IS REDUCED.



Screw Arrangement Machine



Brushless Electric Screwdriver



Signal Cable



Air Intake Pipe



Power Cable



Screwdriver Bits



L-shaped Wrench

# BEFORE THE CUSTOMER PLACES AN ORDER

## WHAT NEEDS TO BE CONFIRMED ?

### 1. Confirm the screw material.

The screw material is stainless steel(non-magnetic), or iron and nickel(magnetic).



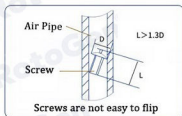
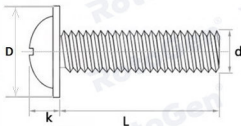
Stainless steel screw  
(Non-magnetic)



Iron screw  
(Magnetic)

### 2. Confirm the size of the screw.

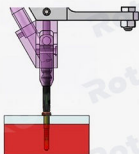
The diameter of the screw, the length of the screw and the diameter of the screw head.



- ☒ d:M1.4-M5.0    ☒ L≤20mm    ☒ Screw with nut    ☒ L > 1.3D

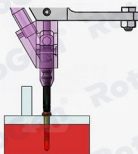
### 3. Confirm the screw holes.

Is the position of the screw hole flat, or is there an obstacle, or is there a deep hole.



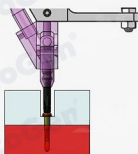
①

Screw holes in flat



②

There are obstacles



③

Deep screw holes

① No parameters need to be measured.

② Obstacle heights and distances to screw holes need to be measured.

③ The depth of the surface from the screw hole needs to be measured.

## ADVANTAGES

1. High efficiency: The action of grasping screws by hand is omitted, and 60-70 screws can be locked in 1 minute.
2. Cost saving: One machine plus one person can replace the work of three people and save two labor costs.
3. Easier: the left hand does not need to take screws, it can be used to hold the product, and the workload is reduced.
4. Cleaner: The hand no longer directly touches the screw to avoid rusting of the screw caused by hand contact.

## INSTRUCTIONS

1. Connect the air source, adjust the torque of the electric screwdriver, and turn on the power of the equipment;
2. Pour the screws into the silo, and the amount of screws does not exceed the height of the conveying track;
3. Before locking the screw for the first time, check whether there is a screw on the head of the screwdriver;
4. If there is no screw on the bit head, press the screwdriver switch twice, and a screw will be delivered;
5. Hold the electric batch by hand and align the screw hole to press the locking screw;
6. Wait for the electric screwdriver to reach the preset torque and automatically stop rotating;
7. Pick up the electric screwdriver first, and then release the screwdriver switch;
8. When the electric screwdriver switch is released, another screw will be delivered to the batch head;
9. Lock the next screw and repeat steps 5, 6, 7, and 8.

## PRECAUTIONS

1. The screw into the pocket should not exceed the height below the track.
2. Each screw machine is only for one type of screw.
3. Regularly remove screws or foreign objects that do not meet the specifications in the silo.
4. Do not place the machine in a humid, high temperature or uneven place.
5. When taking out the screws on the rail, please be careful not to damage the rail.
6. When the machine is running, do not insert fingers and foreign objects into the silo.
7. If the shape of the locked product is irregular, it can be solved by adding a positioning mold.
8. If any abnormality occurs during use, please turn off the power and unplug it first, then contact us.

## MAINTENANCE

1. Regularly clean the screw pockets to keep the pockets clean.
2. Replace the screwdriver bit. Please replace the screwdriver bit with the same size as the random one.
3. Replace or adjust the brush. The height can be adjusted by loosening the two screws holding the brush.
4. Torque adjustment. The torque can be adjusted directly through the stepless adjustment knob.

# PROFESSIONAL QUALITY ASSURANCE

Independent research and development

Independent intellectual property



HOT

## CUSTOMIZED

Production of non-standard automatic locking screw machine